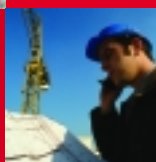


# 1,300 Projects to Increase **Solidarity**

Local and Social  
Business Projects

**2002 Report**



**CAISSE D'ÉPARGNE**



## TABLE OF CONTENTS

4

### A MULTI-FACETED COMMITMENT TO SOLIDARITY

- LSBPs... why?
- LSBPs... how?
- Caring, sharing culture
- Legal recognition
- LSBPs in 2002

6

### SOLIDARITY TO BACK PROJECTS

- Banking services to help achieve the aims of a project
- Financial support for social integration

10

### LSBPs IN FIGURES

## LSBPs : Local and Social Business Projects.

«L» for Local

LSBPs cater to local initiatives in the Caisses d'Épargne catchment areas.

«S» for Social

LSBPs target people in fragile situations or who are seeking to attain self-reliance.

«B» for Business

LSBPs involve projects that will foster business or economic value.

«P» for Project

LSBPs finance projects with clearly set targets, a firm implementation schedule and assessment that's well defined and programmed.



## EDITORIAL

A *solidarity grocery* in Rouen, a consignment shop in Charente, a chef setting up his own business in the south of France, free concerts in Paris-region hospitals, *tactile games* for blind children in Burgundy...

This is what the *Caisse d'Epargne* is all about these days: a high-achieving bank, sure, yet also a close-to-home player with a proactive interest in local social issues. How? By providing financial backing to hundreds of local-focus projects contributing to the development of economic activity, to the *improvement of everyone's everyday lives*.

Here, an EUR 8,000 loan to set up a co-operative generating business and jobs; there, a EUR 10,000 subsidy for an association to buy a vehicle for senior citizen transport; there again, EUR 7,000 for a project *to promote social integration through theatre*...

In all, for the past two years, *2,266* projects have got off the ground throughout France, accounting for nearly EUR *45 million*. It's the result of a drive first launched in 2001 and which was given an extra boost in 2002 since the number of projects was increased by 38% and financial contribution by 13%. The amounts invested in local and social economy come directly from profits posted by the *Caisses d'Epargne*. It is a unique example of commitment to society, and *a great source of pride* for the 44,000 collaborators working for the *Caisses d'Epargne*.

We consider that companies exist not only in order to produce goods or services and to squeeze maximum profits for themselves or for their shareholders, but also - and perhaps above all - to make sure that as many people as possible can benefit through support for a host of *local development* initiatives.

This is the *Caisses d'Epargne's* vision for economy and society, as applied in a zealous and bona fide manner for nigh on... 200 years!

**Nicole Moreau**  
Chair, Fédération Nationale  
des Caisses d'Epargne

**Charles Milhaud**  
Chair of the Board,  
Caisse Nationale des Caisses d'Epargne

# A MULTI-FACETED COMMITMENT TO SOLIDARITY



*Financing Local and Social Business Projects is the Caisses d'Epargne's three-pronged commitment to solidarity: Firstly, it's a matter of backing, in various ways, operations to promote social integration; Secondly, the scheme brings together partners and elected representatives to focus on putting together, analysing and following projects up; Lastly, the amounts earmarked for this support are taken from the Caisses d'Epargne's profits.*

## LSBPs... why?

The Local and Social Business Projects open up access to bank loans to people seeking to develop their self-reliance, job-seekers, entrepreneurs... They also help people in dependent situations (reduced mobility, old age, sick...), back initiatives for the integration of young people or participate in the teaching of basic skills.

LSBPs correspond to well-defined projects which meet the requirements set by the Caisse d'Epargne. For each project an agreement is drawn up between the Caisse d'Epargne and the implementing structure: association, co-operative, foundation etc.



## LSBPs... how?

Requests for backing have to be sent to the local Caisse d'Epargne. To qualify for the LSBPs scheme, the projects must fulfil a certain number of conditions. Each one is examined in-depth. The projects considered to be receivable are examined by a selection commission which then puts proposals forward to the Caisse d'Epargne Board.



## Caring, Sharing Culture

Since their foundation in the 19th century, the Caisses d'Épargne have geared practice around caring and sharing. This attitude is now shared by all administrators and partners. Stemming from a philanthropic attitude - encouraging people to save and insure themselves - they have, throughout history, encouraged initiatives to promote self-reliance. Today, on top of the LSBPs, they back various corporate patronage operations, in particular in the social sphere via the Fondation Caisses d'Épargne pour la solidarité (Caisses d'Épargne Foundation for Solidarity) and the association Finances & Pédagogie (Finance and Teaching).



## Legal Recognition

The Act of June 1999, which transformed the Caisses d'Épargne into co-operative banks, also confirmed their specific feature: carrying out missions of general interest. Financing local and social business projects is the modern expression of their commitment. The Act also defines them and stipulates how to calculate the amounts to be earmarked for them each year.

## LSBPs in 2002

In 2002, the Caisses d'Épargne decided to back 1,316 projects, i.e. 38% more than in 2001, for a total amount of nearly EUR 23 million (EUR 20.3 million in 2001). These LSBPs are divided into two major spheres of intervention: banking solidarity and social and civic solidarity.



# SOLIDARITY TO BACK PROJECTS



## Banking services to help achieve the aims of a project

*Everywhere in France, people who have been sidelined from the job market create very small companies. Not only do they create their own job, their business also generates economic wealth and contributes to improvements in standards of living. The 33 Caisses d'Epargne demonstrate solidarity throughout their career.*

### ■ Making it easier to start your own business

Each year, people hoping to get a footing in the professional world manage to create jobs. Whether they were in great difficulty, unemployed or suffering from reduced mobility, they created 30,000 jobs in 2001, by setting up very small businesses. These micro start-ups represent a real hope in terms of development and social integration.

This highly encouraging result must not hide the very real difficulties inherent to starting up your own business for those who have neither mentor nor financial backing. Hardly familiar with the complexity of the steps involved in company start-up, without any savings, nor sufficiently stable finances, potential entrepreneurs rarely obtain the loans they need.

Based on this observation, the Caisses d'Epargne thus decided to make a commitment in this sphere.

### AN ACCOUNT

#### *A business in Auvergne*

“After many years of dead-end jobs, I decided to set up my own business. Yet I didn't have a penny to my name, only the know-how acquired via various jobs. I had the opportunity to take over a grocery in Saint-Tours-les-Roches, a small town in Auvergne, when the grocer retired. I put together a file with the help of the Riom Chamber of commerce and industry and the Combrailles joint union. I had been spurned by three banks before Puy de Dôme Garantie (France Active) and the Caisse d'Epargne d'Auvergne held out a helping hand. I shall be open for business in April 2003. Customers are looking forward to it. Every day, they ask when I shall be opening. It looks promising.”

*Jean-Philippe Lacroix, grocer*

### AN ACCOUNT

#### *Telephone and IT networks*

“When the telephone company I worked for went bankrupt, I spent two years on the dole and temping.

With my accounting diploma and know-how, I have now managed to set up a small company specialising in the installation of telephone and IT networks in Clichy-sous-Bois, thanks to loans from the ADIE and the Caisse d'Epargne Ile-de-France Paris.

It's changed my whole life. I have to deal with everything: management, sales, technical operations for customers, logistics. I'm learning something new every day and I've become really self-reliant. I now have two employees: who used to be on the dole, just like me.”

*Henri Diafouka, entrepreneur*

## ■ Backing for entrepreneurs

Entrepreneurs today have mentoring networks to help them get their project off the ground. These are mostly made up of associations, namely the Association pour le droit à l'initiative économique (Association for the right to business initiatives or ADIE), France Active, Boutiques de gestion (Management Boutiques), France Initiatives Réseau (Network Initiatives France) among others.

They all provide vital leverage to help get projects off the ground. They help to formalise, test, draft a financial plan and find banking contacts. Some go as far as to guarantee the bank loan, finance the loan, smooth the whole process or round the bank loan off with loans on trust.

Thanks to these organisations, 75% of these micro-entrepreneur projects are still afloat three years later.

The Caisses d'Épargne complement these organisations by providing their skills and on-the-field knowledge.

With respect to LSBP financing, they back entrepreneurs and the mentoring organisations.



## AN ACCOUNT

### *Catamarans from Génération composite*

“ As a specialist in composite materials, I did a two-month internship in a company whose boss had designed and made a boat he couldn't sell. After stints in various companies in the South-East of France, I ended up on the dole. The 12-ft outboard catamaran was still in the hold. My ex-boss, who had in the meantime become a friend, transferred the moulds to me. This spurred me to start my own company up. I put my file together, including the finances and drew up my cash plan. With the help of ACE, an association that helps start-ups, the PACI (Pays d'Aubagne-La Ciotat Initiatives) and the Caisse d'Épargne de Provence-Alpes-Corse-La Réunion, I managed to put together the necessary funds to start up “Génération composite”, my limited company. The first season, I managed to make and sell two boats to rental companies in the region. On this promising market, I'm hoping to sell around 20 in 2003.”

**Pierre Aguilon**, founder and director, Génération composite

## AN ACCOUNT

### *Bits of paper*

“ I've always loved drawing. After my divorce, I found myself on the dole. So I struck out and set up my own company. With the backing of the Boutique de Gestion Aile de Marmande and the Caisse d'Épargne Aquitaine Nord, I got a subsidy which made it possible for me to open my workshop Les bouts d'papier (Bits of Paper) in Meilhan-sur-Garonne, a small village in central France that attracts many tourists. I organise drawing workshops for the young and not so young and I sell my own output: papier mâché, animal portraits, painted furniture and objects... My pastime has now become my bread-and-butter. It's helped me to regain a sense of self-confidence.”

**Marie-Annick Sère**, entrepreneur



## Financial Support for Social Integration

*To increase effectiveness, the Caisses d'Epargne have chosen to focus their operations on six crucial spheres.*

### ■ Acquiring basic skills

The three R's... Without them, everyday tasks can be a real hassle. Acquiring them is the first real step towards self-reliance. The Caisses d'Epargne have made a very real, wide-ranging commitment to this.

### ■ Self-reliance for senior citizens, sick people and people of reduced mobility

Dependent people suffer from condescending attitudes and would like to be better integrated into daily life. The Caisses d'Epargne support important projects carried out by many associations which act on a daily basis to maintain social ties. In these two spheres, the Caisses d'Epargne Foundation for solidarity, officially recognised as being of benefit to the public, provides expertise and additional financial support.

### ■ Integration through employment

Thousands of unqualified people and people who have experienced career difficulties find it hard to access training schemes leading to employment. The Caisses d'Epargne support associations for integration that encourage apprenticeships and the sharing of experience.

## AN ACCOUNT

### *Sagittaire: Horseback Therapy*

“Two young people of reduced mobility, both crazy about horses, founded Sagittaire. Our association cares for and tries to help paraplegics, tetraplegics and autistic people to find their place in society through equitation. We belong to the French Federation Handi-Cheval, we train care-givers and educators to use this therapy, in partnership with Cadre Noir de Saumur. The Caisse d'Epargne du Limousin subsidy helped to finance the design and manufacture of specific equipment and transport for sick people. The sheer commitment of these two young people demonstrates that reduced mobility is not only something that gives you rights. With their zest for life, they have left behind dependence, passivity and depression.”

*Christian Renaux, Chair, Sagittaire*

## AN ACCOUNT

### *Tending the Garden of Hope*

“We support people in difficulty by putting them back to work thanks to three activities: construction, protecting the environment and gardening. For this last activity, the subsidy from the Caisse d'Epargne des Pays du Hainaut helped towards buying a utility vehicle which really simplifies matters for us. We can transport our power tiller and greenhouse installation equipment to our three sites near Maubeuge. It saves us time and our ten gardeners have been given a fillip of motivation. Most of them will be given a place in training courses leading to qualifications that will help them find work.”

*Pascal Brillant, technical supervisor, Association de gestion et d'innovation dans l'integration économique (Association for Management and Innovation in Economic Integration or AGIIE)*



## ■ Basic Needs

Food and lodging: two basic needs for all human beings. Right now in France, some 2.5 million people still do not have adequate housing and several thousand are homeless. In this fight against the harshest form of exclusion, Caisses d'Epargne teams have taken a highly proactive stance by backing the projects of associations.

## ■ Integration through Culture and Sport

Just as much as work, culture and sport contribute towards social integration. The Caisses d'Epargne support neighbourhood projects and projects that further exchanges, helping as many as possible to gain access to artistic creation, inciting young people to take up sports and so on.

## ■ Integration through the Preservation of Natural and Cultural Heritage

The Caisses d'Epargne support projects aiming to rehabilitate local heritage, insofar as they contribute to social integration. Often, such projects involve associations and companies being able to hire people who then are able to gain a footing in the working world.



## AN ACCOUNT

### *Maintaining a Healthy Balance*

“ Senior citizens are apt to fall frequently, often with serious consequences. Falls in the home occur at least once a year for one in three people aged 65 and above and for one in two after age 80. To prevent such accidents and help people maintain their balance, we have set up Ateliers Equilibre (Balance Workshops) in various hospitals and in our 386 clubs. The Caisse d'Epargne de Rhône-Alpes Lyon subsidy helped to finance the purchase of specific equipment for senior citizens and to pay the leaders of three workshops in the Lyon region. This operation was part of a top-rate preventive operation in gerontology. ”

**Monique Chassagneux**, Fédération française de l'éducation physique et de la gymnastique volontaire (French Federation for Voluntary Gymnastics and Physical Education, boasting 520,000 licensed members in France)

## AN ACCOUNT

### *Snow and Wonders*

“ Each season our association caters for some 10,000 visitor days in our hamlet Minière de Vallauria, right by the Mercantour park and the Vallée des Merveilles (Valley of Wonders). People really get to mingle here, our hamlet is open to everyone, in particular regional organisations for vocational training, integration and leisure activities for young people and people of reduced mobility... The subsidy granted by the Caisse d'Epargne Côte d'Azur made it possible for us to rewire two buildings to comply with standards and to make them more accessible to people of reduced mobility. All additional assets for our social and educational tourism schemes which have an impact on the local economy and in particular employment. ”

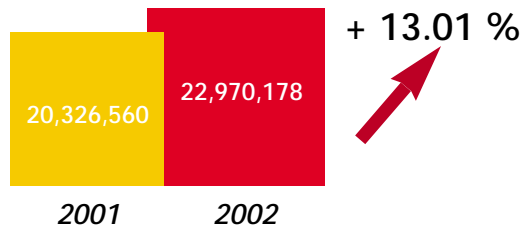
**Christian Le Martelot**, directeur, Neige et Merveilles (Snow and Wonders)



Increase in the number of LSBPs



Amounts in Euros in 2001 and in 2002



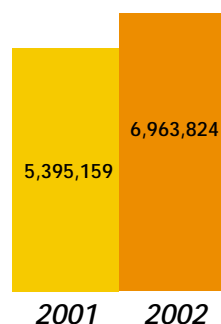
Amounts in Euros by Sphere of Action

Solidarity Banking

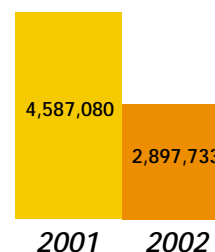
As in 2001, nearly EUR 10 million were earmarked for banking projects. They have in particular made it possible to finance entrepreneurs in micro-businesses and mentoring structures for entrepreneurs.

Over EUR 7 million were granted directly or indirectly to a thousand micro-entrepreneurs in the form of solidarity loans.

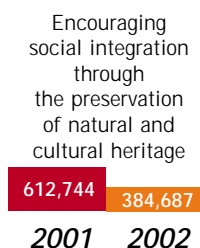
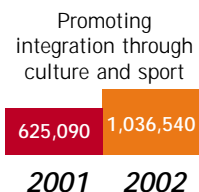
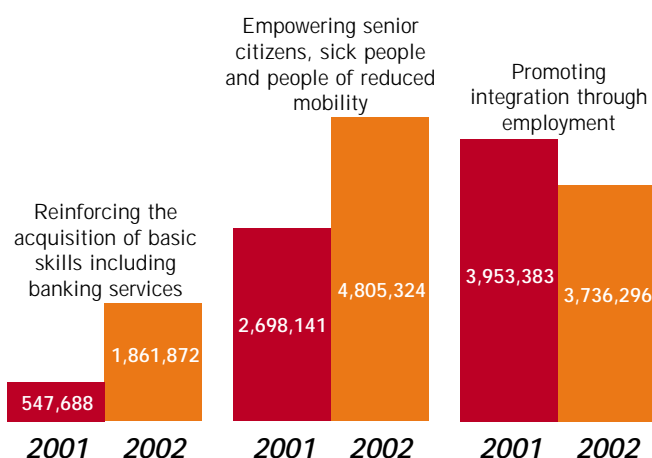
Encouraging financing and banking integration for entrepreneurs



Backing mentoring organisations



Social and Civic Solidarity

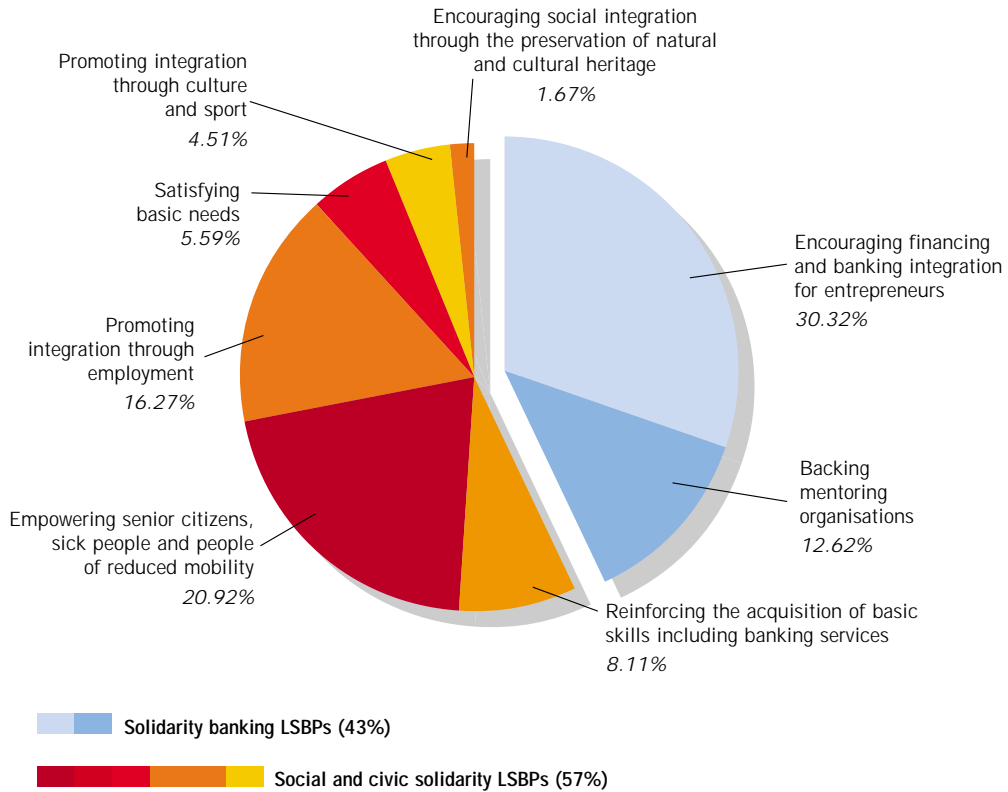


The Caisses d'Epargne financed projects by structures to encourage the hiring of unemployed people or people in great difficulty to the tune of EUR 3.7 million.

In all, financing earmarked for all forms of economic integration for people in difficulty has reached EUR 13.6 million.

Two other spheres were given priority: empowering senior citizens, sick people and people of reduced mobility with nearly EUR 5 million (up 80% compared to 2001) and reinforcing the acquisition of basic skills with EUR 1.9 million, practically triple the 2001 figure.

### Breakdown by Sphere of Intervention in 2002

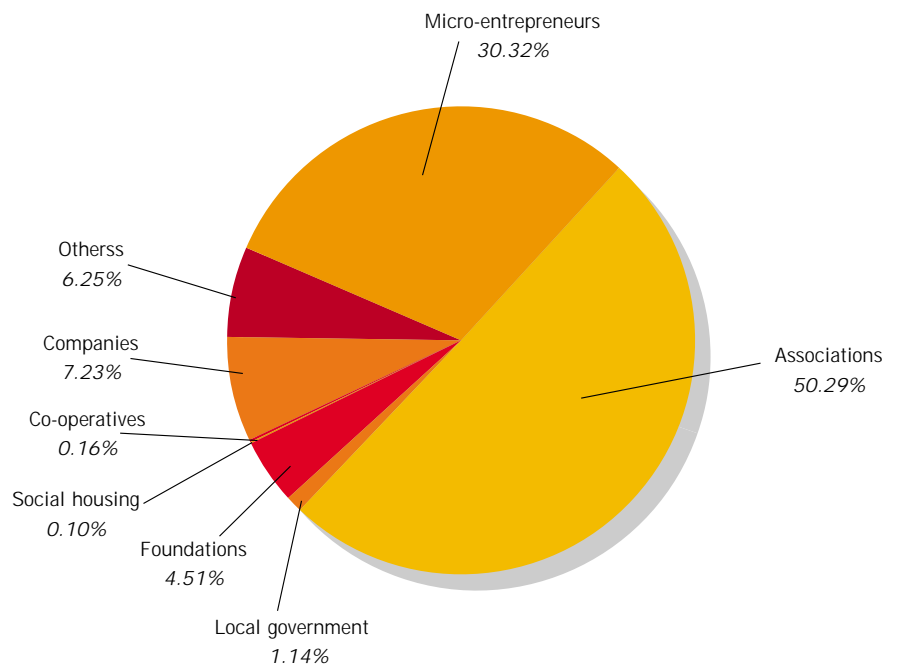


### End Beneficiaries by Legal Status in 2002

Associations working in the spheres of social and civic commitment are the main beneficiaries, accounting for over 50% of financing.

Furthermore, the Caisses d'Epargne earmarked over 30% of the LSBPs 2002 funds to financing loans to make it possible for people in oft-difficult social and financial situations to set up their own businesses.

In the main, these sums come in the form of regional agreements with mentoring organisations for company start-up.



## Overall breakdown by financing method

Financing method	Percentage
Loans	44%
Subsidies	51%
Capital bases	4%
Contributions in kind or in services	1%

## Amount by sphere of action and by financing method

LSBPs FOR SOLIDARITY IN BANKING	Loans	Subsidies	Capital bases	Contributions in kind or in services
Encouraging financing and banking integration for entrepreneurs	5,993,645	793,179	125,000	52,000
Backing mentoring organisations	1,626,304	630,416	558,013	83,000
<b>Sub-total</b>	<b>7,619,949</b>	<b>1,423,595</b>	<b>683,013</b>	<b>135,000</b>
<b>%</b>	<b>75%</b>	<b>12%</b>	<b>74%</b>	<b>57%</b>
LSBPs FOR SOLIDARITY THROUGH SOCIAL AND CIVIC COMMITMENT				
Reinforcing the acquisition of basic skills including banking services	21,190	1,784,022	0	66,750
Empowering senior citizens, sick people and people of reduced mobility	1,266,460	3,549,265	0	1,550
Promoting integration through employment	1,027,981	2,497,145	185,500	25,670
Satisfying basic needs	199,279	1,074,346	15,550	4,600
Promoting integration through culture and sport	15,000	956,877	40,700	4,000
Encouraging social integration through the preservation of natural and cultural heritage	24,600	360,087	0	0
<b>Sub-total</b>	<b>2,554,510</b>	<b>10,221,742</b>	<b>241,750</b>	<b>102,570</b>
<b>%</b>	<b>25%</b>	<b>88%</b>	<b>26%</b>	<b>43%</b>
OVERALL TOTAL	10,174,459	11,645,337	924,763	237,570

At EUR 10 million, the amount earmarked for loans reached 44% in 2002 (42% in 2001).

Subsidies (EUR 11.6 million), although slightly increasing in absolute value, have stabilised at around 50% of the total in 2002.

Capital bases, contributions in kind or in services are of lesser significance, with scarcely more than 5% of the total.

# 1,316 Projects to Increase Solidarity

**Alpes** : Admr de mens, Admr-la Ricandelle, AFFISPPI résidence Louis Roug, Art Bati, Ass. Accueil et hébergement - L'escale, Ass. Alzheimer Savoie/accueil de jour, Assoc. Trait d'union, Assoc. Valentin Haüy, Ass. Solidarité femmes, Atelier Siis, Bièvre Valloire Initiative, Bon rencontre résidence, Centre Saint Francois d'Assise, Chablais Insertion, Collectif d'entraide du Trièves, En passant par la montagne, Finances et Pédagogie, Fondation Le Bocage, Habitat et Humanisme, Isère Sud Initiative, Maison cantonale des personnes, Promob 74 , Relais Ozanam, Résidence Abel Maurice, Résidence Senior le Moulin, Rhône Alpes Création, Savoie Entreprendre, Terre Solidaire, Trans Service Association. **Alsace** : ADIE, AFEV, AGIR, Alsace Active, Association des Résidents et Amis du Neudorf, ATEMA, Enfance Majuscule, Envie, Finances et Pédagogie, Hôpital de Saverne Sainte-Catherine, Imp la Forge, IPLS, Jardins Montagne Verte, Jusqu'à la Mort Accompagner la Vie, La Cité Relais, Le Chaînon Manquant, Le Soultzerland, Orthophonie Prévention Alsace, Plate-Formes Insertion Locale, Récup'Unettes, Redecome, SOS Jeunes, Sport Sans Frontières, Tempo. **Aquitaine-Nord** : A.C.S.A.I.E., Action Jeunesse Pessac, Association pour le Développement Economique, ADIE, ADIL 33, ADOSEN, ADOT 33, Aide à Domicile, Aide à la Jeunesse, Aile pour l'emploi, Aire Agena, Airelle Dordogne, AJR - Aide aux Jeunes en Recherche d'emploi, ALAIJE, Albret Solidarité, Alcor Aquitaine, Antigone, Aquitaine Amorcez, ARPE 47, A.R.R.P.E.J., Asso De Soins à domicile de la Haute Gironde, ASTER, ASTREE, Banque Alimentaire de la Dordogne, Bibliothèque St Louis de Montferand, Boutique de Gestion Aile, CACIS, Cadres Entraide, Caisse Sociale de Développement Local, Centre Actions Humanitaires, Centre Communal d'action Sociale, Centre de Soins du Realais, Cestas Entraide, Cirqu'oui, Club des Amis des Anciens, Club des Entreprises de Cenon, Club des Jeunes Entrepreneurs, Club Microtel Multimédia, Comité de Bienfaisance "Emile Zola", Comité départemental de prévention de l'alcoolisme, Couleur Musique, Coup de Pouce, Coup de Pouce Intermédiaire, Croix Rouge Française, De Fil en Aiguille, Eclisse, Enfants et Libertés, Entretien 24, Envie Gironde, Familles Rurales, Finances et Pédagogie, F.N.A.T.H., Fondation Caisses d'Epargne, Foyer Socio-éducatif Jean Monnet, Geist 21, Gironde Initiative, Handilids 33, Jours d'automne, La Boîte à Jouer, La Dictée qui Chante, La Passion du Livre, L'arbre Vert, L'atelier, L'atelier des bouts de papier, L'atelier Reménagement, Le Cercle de correspondance, Le Club du Développement Local, Le Grain de Riz, L'encrier, Les Bibliothèques Sonores, Les Chemins Verts de l'emploi, Les Clés, Les Colonies Journalières d'Aquitaine L'Hermitage, Les Restaurants du Cœur, Les Têtes à Claques, Le Temps de Vivre, Lettre Ouverte, Lien Interim Insertion, Lot et Garonne Initiative, Maison d'enfants de la Vallée, Maison d'enfants St Joseph, Maison Solidaire, Médecins sans Frontières, Mélusine, Neuf de Cœur, Objectif Emploi, Œuvres Laïques De Ste Foy, Partenaire Insertion, Passerelle, Perigord Initiative, Perigord Ressources, Profil, Reconnaissance du Handicap en Bergeracois, Secours Catholique, Service d'études et d'action Réinsertion Sociale, Société Nationale de Sauvetage en Mer, Société St Vincent de Paul, SOS Amitié, Sparadraps, Sud-Ouest Services, Syndicat Mixte du Site Montesquieu, Technowest-Initiatives, Troupe de la Dame Blanche, UDAF 33, Union nat. de familles de malades mentaux, Unité d'hébergement St-Aulaire, Vent d'Est, Vict'aid, Village des Plateaux. **Auvergne** : Actif'Allier, ADAPEI 63, ADAPEI du Cantal, ADIE, Association Cordeliers Maison Retraite le Donjon, Association L'Espoir, Association Régionale des Organismes Hlm Auvergne, AT21+ Plate Forme Initiat Locale, Billamoz Edouard, Blin Charlene, Breton Laurent, Casanova Jérôme, Caup Marie, Centre Thérapeutique de Nonette, Charentus Gérard, Fernandes José Luis, Finances et Pédagogie, Fousat Christophe, Haute Loire Avenir, La Croisade des Aveugles, Lacroix Jean-Philippe, Larue Daniel, Ligue contre le Cancer, Ligue d'Auvergne d'Athlétisme, Maison de retraite du Montet, Puy de Dome Garantie, Quiles Daniel, Rey Michel, Rholion Guy, Salgueiro Anne Marie, Vannay Jean-Pierre. **Basse-Normandie** : ADIE, AIS Ass. d'insertion Granville, Alcool Ecoute 14, Anecah, Ass. Tourlaville Athlétisme, Calvados Création, Entreprendre en France, Chauviere, Comme un petit coquelicot, Fondation Caisses d'Epargne pour la Solidarité, Guibert, Le Cerf Volant, Lire et Faire Lire dans la Manche, Mission Locale Baie de Seine, Normandins, Pele Exotique Boutique, Podwojewski, Relais Alimentaire de Bayeux, Sarl Morin Frères, Société St Vincent de Paul. **Bourgogne** : ADIE, AGAPE, APH21, APH58, APH71, APH89, Association Accueil et logement jeunes ruraux, Association des donateurs de voix, Association des Paralysés de France, Association pédiopsychiatrie, Beauvray Val D'arroux, Bourgogne Entreprendre, Club des Tournesols, Creusot Défi 2000, Culture et Langue des Signes, Faculté de Médecine, Finances et Pédagogie, France AVC 71, Habitat et Humanisme, Hôpital Local de Seurre, La Balle au Bond, Lectures du Cœur, Le Petit Ruisseau, Lions Club Autunois, Maison de Retraite, OPAC 71, Patapon, Radio Nevers FM, Résidence de la Croix Blanche, Sitaphy, Société de St Vincent de Paul, UDAF Nièvre. **Bretagne** : A.A.T.P.F. Bretagne, ADAPEI d'Ille & Vilaine-résidence La Colline, ADIE Bretagne, A.F.I.P., Ass. Insertion/Logement Resto du Cœur - Finistère, Association D Place, Association Gabriel Deshayes - Foyer Pipark, Association Handisport Sport Adapté Brest, Association Valentin Haüy - Comite de Brest, Atheol, Banque Alimentaire de Rennes, Banque Alimentaire de Saint-Malo, Banque Alimentaire du Morbihan, Batinat, Bretagne Capital Solidaire, Bretagne Développement Initiatives, Cap-Sizun Douarnenez Personnes Agées, Carhaix Entraide Travail Occasionnel, C.E.C.L. Police nationale, Chrysalide, Electro-Foot Brestois, En Route pour l'emploi, Entreprise pour l'insertion, Faire Face Ensemble, Grenouille and Co, Handicap Services 35, Handisport Rennes Club, L'arc en ciel, L'échappée, Les amis du gros chène, Les jardins de Kerbellec, Les Pâquerettes - C.E.M. Creac'h-ar-roual, Loisirs pluriels de Brest, Mission locale Ouest Côtes d'Armor, Mutualité du Morbihan - CRRF Kerpape, OCCE - association départementale du Morbihan, R.E.G.A.R., Régie de quartiers du pays de Saint-Brieuc, Relais enfants-parents Grand Ouest, Résidence senior Arthur Gardiner, Restaurants-relais du Cœur d'Ille et Vilaine, Restaurants-relais du Cœur du Finistère, Visite des malades dans les Ets hospitaliers. **Centre-Val de Loire** : Animation loisirs à l'hôpital, APPECS, A.R.A.P.H., association ANECAH, Association bio-solidaire, Bd Boum, Chato'do, Comité France Parkinson, Direction des Sports - Ville de Tours, Entr'aide Ouvrière, Finances et Pédagogie, Formation pour la Restauration du Patrimoine, Foyer de Cluny, Indre Initiative, Kid Stadium, La Fleur de l'âge, Les Compagnons Bâtisseurs, Les Fiorette, Levroux Services, Mob d'emploi 36, Radio Beton, Résidence des Grands Chènes (Fondation Caisses d'Epargne pour la solidarité), UREI Centre. **Champagne-Ardenne** : ADIE, Association Marnaise d'aide à la Jeunesse, Association Oasis, ATD Quart-Monde, Avenir Jeunes Reims, Conseil Economique et Social de Champagne-Ardenne, Envie Log, Fédération des Œuvres Laïques de l'Aube, Finances et Pédagogie, Fondation Caisses d'Epargne pour la Solidarité, Foyer Princet Ozanam, Initiales, La Sève et le Rameau, Les Amis du Foyer Sainte-Chrétienne, Ligue de Champagne-Ardenne d'athlétisme, Pain contre la Faim et pour l'emploi, Régie Sparnacienne, Reims Université Club, Tremplin 52, URIOPSS. **Côte d'Azur** : ACHHAPA, Actif, ADERF, ADIE PACA, Alpes 06, APAAM, APP, ATIRE, Association Varoise d'aide à domicile, Baobab, Boutique de Gestion ACEC, CCAS Fréjus, CEAS du Var, Chantiers de Jeunes P.C.A, Chrétiens Antibes Solidarité, Club Européen de la Jeunesse, CPE, Culture Couleur, Delta Revie 83, Diab 06, Espoir et Renaissance de l'Agachon, Est Var Initiative, Fier Entreprendre, Format 83, Handi-Basket, IED, Institut Catholique, La Maison du Bonheur, Le Bastidon de Lucie, Les Amis de Paola, Mairie de Mougans-Sartoux, Montagn'habits, Mouvement pour la Francophonie, Neiges et Merveilles, Un Toit pour les Vieux d'Antibes, Visite des Malades dans les Ets Hospitaliers. **Flandre** : ADIE, ALZ Alliance, ASTREE, CCAS De Dunkerque, Centre Culturel André Malraux, Centre International de la Communication, Comité Flamand de France, Conservatoire des Sites Naturels du NPDC, CRESGE, Danse à Lille, Espace Boutique de Gestion, Finances et Pédagogie, Flandre Initiative, Flandre Intérieure Initiative, FLASEN, IESEG, Initiative CLE, Inovam SAS, La Cite du Réemploi, La Sauvegarde du Nord (Andsea), La Sauvegarde du Patrimoine Rural, Le Fresnoy, Les Serres des Prés, Ligue Régionale d'athlétisme, Martine Bernard, Nord Actif, Nord Entreprendre, OMACA-VIVAT, Quoi de Neuf Docteur, Sciences Animées, Sepiah, Sydo, Université Avenir Handicap, USDK Handball, Val des Roses. **Franche-Comté** : ADIE, ARUCAH, CCAS du Doubs, Finances et Pédagogie, Fondation Caisses d'Epargne pour la solidarité, IFM, Jura Initiative. **Guadeloupe** : A.G.A.S.S.P.A.L.E., Ass. guadeloupeenne de soutien aux handicapés, Association Case Saint Martin de Porres, Ass. Parents d'enfants handicapés de la Guadeloupe, José JOGI, Progestion Partner, Trocadiertrot Menuiserie, Victoire VINCENOT. **Haute-Normandie** : 3ES, Adapt, ADIE, ASCERE, ATA Service aux personnes, Ateliers de la solidarité, Ateliers du Méandre, Banque alimentaire, Bateau de Brotonne, Conservatoire des sites naturels, Culture du Cœur, Distri Service, Education et Formation, ENVIE, Fondation Caisses d'Epargne pour la solidarité, Finances et Pédagogie, GIHP Haute-Normandie, Haute Normandie Active, Hôpital de Breteuil sur Iton, La Prévention routière, Les Amis du Monde, Les jardins de la Bresle, Les Papillons blancs, Maison de retraite d'Ecouis, Médiacité, Normandie Chiens Guides, Paralysés de France - Bléville, Pause Café, Planning Familial, Plates-formes d'initiatives locales, SNSM, SOLEPI, Stade sottevillais 76, Union sportive de Fécamp, URIOPSS, Vélo service. **Ille-de-France Nord** : ADIE IDF, Amicale Sportive de Poissy, APUI Les Villageoises, Château de la Roche Guyon, Fédération des Œuvres Laïques du Val d'Oise, Fédération Française d'Athlétisme, Finances et Pédagogie, Fondation Caisses d'Epargne pour la Solidarité, Fondation Royaumont, IFAC 95, Lycée Fénélon, Parc Naturel Régional du Vexin Français, PRISME 95, Réseaux de savoirs réciproques, Théâtre de la vallée, USSEP 95. **Ille-de-France Ouest** : ALIA Louveciennes intégration, ALJT, Association Aidera Yvelines, Association le Valdocco, Association Sport Culture et Handicap, ADIE, Cap Decisif, Face, Fondation Caisses d'Epargne pour la Solidarité, Finances et Pédagogie, HP Garches, Incubateur Ile de France, Le mois Molière, Musée Promenade de Marly, Prolog'ues, Rêve d'enfance, Trappes Saint Quentin Football Club. **Ille-de-France Paris** : ACSC Cité Myriam, Action Emploi, Action H, Actions H - Espaces Loisirs, Adept 93, ADIE, Advocacy Ile-de-France, AFASER, Age d'or de France, Adultes Jeunes Changeons la Vie, Animation Loisirs à L'hôpital, AP-HP Hôpital de la Salpêtrière, Approche, Art dans le Jardin, Association 13 Voyages, Aurore, Association Belle Etoile, Association Cortex, Association Intermèdes, Association Jean Cotxet, Association la Chapelle, Association Resolux (Les Papillons Blancs), Association Spina Bifida, Association Une yole pour le Val Maubuée, Association Vilcena, Astrolabe Formation, ATD Quart Monde, Autres Directions, Axe Formation Insertion, Bail Pour Tous, C3r 93, Caravanseraïl Développement, CASP, Centre de formation du PUC Rugby, CHU DE Bicêtre - AP-HP, C N R H, Coup de Pouce, EMDH Enfants du Monde Droits de l'Homme, Equinox, Externat Médico-Prof. de la Résidence Sociale, GOSB Centre de Protection Infantile, GOSB Centre de santé de Belleville, GOSB Crèche Française Lagrange, Handimédia, Hôpital Louis Mourier, Initiatives 77, La Clairière, La Lampe magique, La résidence sociale, La table de Cana Genevilliers II, L'auberge Groupe SOS Insertion et Alternatives, Lectures nomades, Le Kinnor affilié APEI papillons blancs, Les enfants du jeu, Les équipes d'amitié, LYS.E.A., Mission Possible, Paris Initiatives Entreprises France Active, Pépinière Mathis, Prête moi tes yeux au théâtre, Régie de Quartier du 19<sup>e</sup> Nord, Résidence Sociale Picpus, SAS 93, Solidarités Nouvelles pour le Logement, Solidarités Nouvelles pour le Logement 75, Sport Handicap, Sport sans Frontières, Un Cœur pour Créer, Union Santé Social et Profession, VMEH, Volontariat et Soutien par l'art. **Languedoc-Roussillon** : A.A.J.D, ABES, ADATLP, Ad Hoc Voile, A.G.O.P, Airdie, Airelle, ARFACS, ASmoune, Boutique de Gestion de Nîmes, Classe Senior 11, Club Léo Lagrange, Crea Lead, Ecuries des Hautes Cévennes, El Mener, Energies Alternatives, Face Herault, FDPLS / BAL, Femmes de la Méditerranée, Formaide, Formasud, GEVIQ 853 HLR, Graine de Lire, Inondations Gard Herault, Le Tremplin, L'hermine de Rien, Pic St Loup Hte Vallée Hérault, Pléiades Services, Restaurants du Cœur, Rile Hérault, Terroir Direct, Trema, UREI, Yvonne Malzac. **Limousin** : ACEL, ADAPEI Corrèze, ADIE Limousin, AIRELLE Limousin et Corrèze, ALEFPA - CAT, APAJH Haute Vienne, Ass. Sportive St Junien Athlétisme, Ateliers du Saillant - Corrèze Atelier Protégé Ser, CIPA, Cité des Métiers et des Arts, Familles Rurales 2 L'arbre De Vie, Fonds France Active, Haute-Vienne Initiatives, Maison Heureuse, Marad, Mission

Locale Brive, Restaurants du Cœur Hte Vienne, Sagittaire, Volley Club Tulle Naves. **Loire Drôme Ardèche** : A.J services-Solstice, Amicale laïque de Villebœuf le Haut, ACTFORM, Association CILDEA, Ciné-Rivage Espace Noir, Drôme Ardèche Entreprendre, Ecoutez Voir, Environnement et Emplois 2e Loire, Eva, Freekite, Habitat et Humanisme, Handi Club Excursion 26, Impact, L'As de Trèfle, Le Père Noël du Lundi, Les Amis des Grands Murcins, Le Tremplin, Loire Entreprendre, OASIS, Solidarité Femmes Loire, Terre Ferme, Vie et Santé à domicile, Vieillir au Village, Comité des Loisirs du Foyer "Le Rivage", Chambre Régionale de l'Economie Sociale, Finances et Pédagogie, Fondation Caisses d'Épargne pour la Solidarité, Galerian's Press Club, MIFE Bassin d'Annonay, MIFE de St Etienne, Mission Locale GIER PILAT, PFIL 5<sup>ème</sup> Pôle initiative Drôme Provençale, PFIL Ardèche Centre Initiatives, PFIL Ardèche Nord Initiatives, PFIL Ardèche Sud Initiatives, PFIL I.E.D.V, PFIL Val de Drôme Diois Initiatives, Pollen-Coope d'emplois, Rhône Alpes Création. **Lorraine Nord** : ADIE, AIEM, Alexis, Alpha Plappeville, Ass. Albert Schweitzer, Ass. pour l'insertion des personnes handicapées, Ass. dpt. des amis et parents d'enfants inadaptés, Ass. travailler dans le bassin houillier, Batigere Sarel, Croix Rouge de Jarny, Croix Rouge Morhange, DDDD, Emergence, Finances et Pédagogie, Gesval, Hélice Saulnoise, Metz Basket Club, Mission Locale du Nord Mosellan, Moselle Est Initiatives, Pays Haut Initiatives, PFIL Homecourt, Régie de Quartier de Sarreguemines, Sainat Nabor Services, Solidarités Nationales et Internationales, Ville de Sarrebourg. **Martinique** : Association Aide Aux Défavorisés, Association d'Action Sociale de Martinique, Association Martiniquaise pour la Promotion, Fondation Caisses d'Épargne pour la Solidarité. **Midi-Pyrénées** : ACCUEIL REINSERTION EXCLUS, A.D.A.P.E.I., ADAPEI Aveyron, ADAPEI du Gers 32, A.D.C. Association Développement des compétences, AD'HOC Voile Compétition, ADIAD Ass. Dpt. pour l'Intégration d'Adultes en diff., Ass. Départ d'Insertion et de Formation, ADMR, AEHEA, Aidons Nous, AIFOMEJ, AMDAH/ASD, Amicale de Ranguell, Amicale Laïque de Graulhet, Amis et Compagnons d'Emmaüs, Vies'ages, APAJH, APPS, ARTIES, ASDASS, Ass. Espace et Vie CHRIS, Association Relais-Action, Association Alliance, Association du Boutge, Association Familiale Cantonale, Association Formasud, Association l'Oustal, Association Partage Faourette, Association Sport Adapté "Les Bavbissous", Association "Unité de Vie", Association "Vivre Mieux", A.T.D Quart Monde, Avenir, Ax Banascre Avenir et Développement, Banque Alimentaire, Bigorre Solidarité, Bourba Qui Vit, CADA/CEIIS, CAGT CDC CG CAF ASGV ETAT, Cap Centre, Clap Midi Pyrénées, Comité de bassin d'emploi du Nord-Est Toulousain, Crescendo, Croix Rouge Française, EGEE, Entrez sans Frapper, Envie, Espace Accueil du Fort, Fauteuil Gliss', Finances et Pédagogie, Fondation Caisses d'Épargne pour la Solidarité, Foyer "Les Charmettes", Foyer Soleil Vigouroux, Groupe Folk Lous Mirandes, Handi Aide, Haut-Adour Gérontologie, Haute Garonne Initiative, Hexagone, Hôpital de Caussade "Le Jardin d'Emilie", Jeunesse et Loisirs, Le Restaurant de la Solidarité, Les Amis de Flaran, Lions Club De Maubourguet, Mission Locale pour l'emploi, Moissac Insertion Vie Active, Montauban Tarn & Garonne Initiative, Notre Dame des Frères de la Rue, Recup'actions 65, Rêve D'enfant, Secours Catholique, Secours Populaire Français, Stratégies, Tremplin pour l'emploi, Union Mutualiste "La Roseraie", Village Terre D'espoir, VMEH, Web Sourd. **Pas de Calais** : ADER Initiative, Alpha Calais, Artois Entreprendre, Artois Technique Services, ASHP CEM Lievin, Association La Péniche, Autonomie et Solidarité, Chenelet Insertion, Côte d'Opale Entreprendre, Finances et Pédagogie, Fondation Caisses d'Épargne pour la Solidarité, Gip Ineraction 62, IME La Vie Active, Kiwanis Calais Côte d'Opale, Liberté Voile Côte d'Opale, Mission Locale de Montreuil, Parc Naturel des Caps et Marais, Secours Catholique Allouagne. **Pays de l'Adour** : ADIE, ADIE 64, A.D.M.R. 40, AGIR 64, A.L.P.C.D., Arche de Noé, Association Brassalay, Association d'aide aux chômeurs, Association Humanitaire de Santé Mentale, Association pour Promotion sociale et professionnelle, Association Vivre ma ville, Bearn Initiative, Bultzta, CIAPA, Club des entreprises citoyennes, C.P.I.E., Finances et Pédagogie, Fondation Caisses d'Épargne pour la Solidarité, Haurra, Hemen Elkartea, Interstices en Pays de Seignaux, Mission Locale pour les jeunes de l'agglomération, Recyclage Service, Ste Canine Départementale des P.A., UNSS Landes et Pyrénées Atlantiques. **Pays de la Loire** : ADAPT, ADASA, ADIE, ADMR Vendée, Amicale Parents Elèves IME Parigné l'Évêque, Angers Mob Service, Anjou Domicile, APEI - Papillons blancs, ARRIA, ASFAVI Maison Sainte Famille, Ass. départementale lutte contre l'illettrisme, Association des Cités du Secours Catholique, Association des Paralysés de France, Association Echanges Internationaux et nationaux, Ass. Réinsertion Traumatisés Craniens Atlantique, Banque Alimentaire, Bois et Bocages des Mauges, Bouge avec Moi, Cap aux Sciences, Cap Savoir, Carrefour Entreprise Sarthe, CASIM Vendée, Centre de Formation Alexandre Besnard, Centre Recherche Histoire, Collège Saint Joseph, D'une rive à l'autre, Escalpe Nantes, Estuarium, FJT Le Fenet, Fonda, Fondation du Patrimoine délégation Vendée, Fondes, Fondes - France Active, Fraternité TOBOR, GLE "Monts-et-Marais", Institut Education Motrice La Buissonnière, Jeune Chambre Economique Nantes, La Chainette, La Citadelle, L'Eclaircie, Le Jardin d'Enfants, Le Jardin Fleuri, Le Potager Associatif, Le rire médecin, Ligue Athlétisme des Pays de la Loire, Ligue pour la Protection des Oiseaux, Logement Fraternité, Ménage Service Vendée, Nantes Initiative, Œuvres sociales de la Fraternité, Onco Plein Air, Passerelle, Patrimoine 2MB, Pays Yonnais Initiative, Presta Entreprise, Relais Femmes d'ici et d'ailleurs, Seneve arche, Service Aide Rurale Travailleurs Handicapés, Société St Vincent de Paul, Solidarité Plurielle, Sos Amitié, SOS Dépression 44, Spectacle Technique Association Française Formation, Terre des Sciences, Union Foyer Jeunes Travailleurs Région Pays Loire. **Pays du Hainaut** : A.C.I.D, ADHAI, ADIE, AFAD, AGIIE, Alter Eco, Association de Sorties Familiales, Autonomie et Solidarité, A.V.D.S.P, Cambrésis Initiative, Carrefour de l'amitié, Centre L'Adapt Cambrai, Centre Social de la Région d'Ostricourt, Centre Social et Culture RAIL ATC Service Insertion, Ecole S.Lanoy, Ecole St Roch, Espace Naturel Régional, Finances et Pédagogie, Flasen, Fondation Caisses d'Épargne, Genet 21, Hergnies Solidarité Emploi, Jeunesse Prouvysienne, La Coccinelle, La Maison des Lutins, Les Bleuets du Nord, L'UCIE Service, Musée de La Chartreuse, Nord Actif Fonds Départemental pour l'insertion, Orchestre de Douai Région Nord Pas de Calais, Prévention Education Santé, Re Actifs, Réseau de recycleries et Ressourceries, Restos du Cœur, Restos du Cœur Sambre Avesnois, SOS Bébés, SOS Insertion et Alternatives Germinal, UFOLEP, UNIS CITE, Val Initiative. **Pays Lorrains** : ADAPEI des Vosges, ADIE, ALTIR, Amitiés Tsiganes, ARES'AU, Association de Réinsertion Sociale, Association pour Adultes et Jeunes Handicapés, Batigere, Centre de documentation Sociale, Commune de Saint-Nabord, Conseil Général des Vosges, Croix Rouge Française - Meuse, Cité d'Organisation Jeux Mondiaux des Transplantés, Foyer du Jeune Ouvrier au Grand Sauvoy, Jardins de Coccagne, Matières à Poésie - Le Garage, Nancy Jazz Pulsations, Office de la Culture de Rambervillers, Office des Centres de Vacances et de Loisirs, OHS Maison d'Enfants de Méhon, PAIO des Vosges du Sud, PFIL Sud Nanéens et Tulois initiative, PFIL Val de Lorraine Initiatives, PLURIDIS Cadres, REGARTS, Sce d'Intégration Scolaire et Universitaire, Scènes et territoires en Lorraine. **Picardie** : ADAPE, ADHP CREIL, A.D.I.E., Agence Immobilière à Vocation Sociale, Agora, Aisne Initiatives Emploi, A.J.E.P., Amiens Sud Projets, A.P.R.E.S., Artistes et Amateurs Pontois, Association Entraide Maxipontaine, Association Fouquennes, Association Musée Jean de la Fontaine, Association Scie Jardins Coccagne, Associations des Opérés du Cœur, Association Tutélaire Aisne, Banque Alimentaire Oise, Beauté Services, Boutique de Gestion de l'Aisne CEPAC, Boutique de Gestion de la Somme, Boutique de Gestion de l'Oise "Le Roseau", Cardan, Castors France Nord, Centre Hospitalier Decroze, Centre Hospitalier de Peronne, Centre Intercommunal de services à domicile, Commune de Leglantiens, Conservatoire Musique, COOP-LOGIVAM, Croix Rouge Française Départementale, D.E.C.L.I.C.S., EPSMDA DRAC, EPSMDA DRAC Laon, Fondation Caisses d'Épargne, Foyer de La Liovette ADAPEI, Foyer Jeunes Travailleurs Nogent, Jeunesse Au Plein Air JPA, La Fraternelle de Conty, Les Amis de l'église d'Ardon, Les amis du château de Ham, Les Petites Mains, Lion's Club de Chantilly Connetable, Maison Convalescence l'Oasis, Maison de Retraite Louise Michel, Mairie de Saint Quentin, Musée Boucher de Perthes, Oise Est Initiatives, Oise Sud Initiatives, PEP 80 secteur v.i.e., Phonotopie, Résidence Maurice Fecan, Restaurants du Cœur, Restaurants du Cœur de la Somme, Soins Services, Solidarité et Développement, Somme Initiative, Sté membres légion d'honneur, Télé Baie de Somme, U.S.E.P. **Poitou-Charentes** : AAHPA, ADIE, AFIPAR, AFMA, AGVRC, APSA, ATASH, AUDACIE, Boutique Solidarité l'Eclaircie, Centre de Plein Air de Lathus, Centre Soc.cult. - Mil idées, CREDIS, Cuisines du Monde, Finances et Pédagogie, FMCC, Foyer de vie APF - Centre Gabrielle Bordier, Interface, JAPD, La Cigale, La Verdinière, Le Berceau, Le Jardin Coopératif, Les jardins de magister, Résidence Clodomir Arnaud Maison de retraite, Restaurants du Cœur, Special Olympics Atlantique, Tremplin, Trois fois +. **Provence-Alpes-Corse-La Réunion** : 2A2IE, Abril parental, ACAT, A Conseil, Acta Vista, ADAPEI, ADEPAPE 2A, ADIE, A Fratellanza, AJJT Escalpe St Charles, Alain Vidal, Alma Vaucluse, AMCP, Amroucci, Andres, Antetomaso, Anthore, Apt Initiative Albion, Arcade Assistance, Ass. Donneurs de Voix, Association 3 A, Atelier Protégé, Ballarin, Ben Ameur, Bennedine, Bistolfi, Boyer, Candau, Cavallino, Centre Promotion de l'emploi par micro entreprise, Chambre Syndicale de l'habillement, Chrysalide Arles, Creyssac, Criscemu Insemu, Croix Rouge Française, D'angeli, Delhommeau, Energies Alternatives, ERA, ERAU, ESIA, Eurl Le Coin Toutous, Falgat, Fanet, Farrandou, Finances et Pédagogie, Fondation Caisses d'Épargne pour la Solidarité, Fontana, Garcin, Goutiere, Grand Avignon Initiative, Gueraidi, Guidicelli, Guillermet, Hadar, Haute Provence Initiative, Haut Vaucluse Drôme Provençale, Hrebly, Icom Provence, Imbert, Initiative en Pays Cavare et des Sorgues, Initiative en Pays Dignois, Initiatives Conseil, Initiative Grand Briançonnais, Insercollect, Institut de Gérontologie Sociale, Institut Mode Méditerranée, Jacomacci, Jean Louis Hostache, Jeune Chambre Economique de Digne, Jouanne, Koin, Lacroix, Langerberg, L'autre Rive, La Vie devant Sol, Le Fil d'Arianne, Legris, Les Environneurs, Lire avec Leo et Lea, Maghakian, Maison de L'harmonie, Maison de Retraite Les Cannes Blanches, Malbœuf, Martinez, Masu, Mellino, Mougeot, N'guyen Van Toi, Ouest Etang de Berre, Pargest, Patrice Avarro, Pays Aubagne La Ciotat Initiative, Pays d'Aix Initiative, Pays d'Arles Initiative Locale, Pays de Comtat Initiative, Pays Gapençais Initiative, Poussardin, Proencia, Proxim's Services ADPEF, PSP Mediation, Réunion Entreprendre, Roume, Rozier, Sarl Archi Consultant, Sarl Aspi Provence, Sarl Aubanet, Sarl Creatis, Sarl Europe Top Express, Sarl Gallimon, Sarl Gastaldi, Sarl Helios Image, Sarl Ines K, Sarl La Roue Provençale, Sarl Les Flots Bleus, Sarl Les Marquises, Sarl LMC, Sarl L'Olive Bleue, Sarl Ornyls, Sarl Real Evolution, Sarl Spines, Sarl Studiomedias, Sarl ZM Communication, Secours Catholique, Secours Catholique de Gap, SEDDI, SIPEC, Sketch Up Cie, Sol en si, SOS Jeunes Betel, Soulier, Sud Luberon Initiative, Symbioses, Tradi Renove, Transport Mobilité Solidarité, Tricastin Initiative et Développement, UPOL, Vie Nouvelle, Ville Nouvelle Initiatives, Yann Le Cam. **Rhône-Alpes Lyon** : ABH - Ass. Bibliothèques Hôpitaux Lyon et Région, Accompagnement et Emploi, ADAPEI, ADIE, Aide Alimentaire Saint Genoise, ANEF, A.R.H.M. Saint Jean de Dieu, ASS, A.S.S.A.G.A., Association Transit, Association Amis Malades pour Enseignement, Association "As de Cœur", Association Bonheur & Bien Etre, Association C.A.P.E., Association d'aide à domicile de Lyon 5<sup>ème</sup>, Association des Amis des Malades pour l'enseignement, Association des Paralysés de France, Association Enfance Famille Adoption de l'Ain, Association Eureka Belleville sur Saône, Association Feyzinoire d'athlétisme, Association FIDEV, Association Française Lesch-Nylan Action, Association Girol, Association Habitat Regroupé La Duchère, Association Handisport de Villefranche sur Saône, Association Lumière contre la Leucémie, Association Maintien à domicile St Genis Laval, Association Saint Louis Roche, associations tutélaires : ATR,CPA,GRIM,ATMP, association tutélaire des Pays de l'Ain, association verticale, A.V.R.A.M.S.P., Bièvre - Valloire Initiatives, C.A.T. Dienet, Centre Ain Initiatives, Centre Hébergement Temporaire "Les Tilleuls"-ADPA, Croix Bleue des Arméniens de France, E.G.E.E., Entente Athlétique de Villefranche sur Saône, Finances et Pédagogie, Fondation Ceral, Football Olympique de Bourg en Bresse, Foyer Notre Dame des Sans Abris, Foyer socio-éducatif Collège Théodore Rosset (01), Groupe pour emploi des Probationnaires, Habitat et Humanisme, Handicap International, Handivienne, Jeune Chambre économique de Lyon, Joujouthèque d'Oullins, La Fraternelle de Bourgoin Jallieu, Les Petits Frères des Pauvres, Les Potagers du Garon, L'Étincelle, Lycée Paul Painlevé, Maison de Retraite Albert Morlot, Maison de Retraite de Bage le Chatel, Maison Retraite Monplaisir, Maison Retraite Saint Joseph Vernaison, M.A.R.P.A., Mode d'emploi Rhône, Nord Isère Initiatives, Notre Dame des sans-abris, OHE PROMETJEE Rhône, O.R.S.A.C., PACEREL, P.A.R.I., Qualidom, Restaurants du Cœur, Rêves Isère, Revivre Rhône Alpes, Rhône Alpes Création, Rhône Développement Initiatives, Rhône Pluriel Initiatives, S.E.P.R., Sport dans la Ville, Unis Cité, Union Nationale du Sport Scolaire. **Val de France Orléanais** : 7 à 97 ans, ACM Formation, ADIE, APAJH, APLEAT, Chambre des métiers du Loiret, Cher Initiative, Entraide berruyère, ENVIE, Finances et Pédagogie, Le Relais, Ligue du centre d'athlétisme, Loiret création initiative, Nouvelles entreprises, SA HLM de Montargis, Soleil d'automne, SOS Travail, UREI Centre, Ville de Chartres.



**CAISSE D'ÉPARGNE**